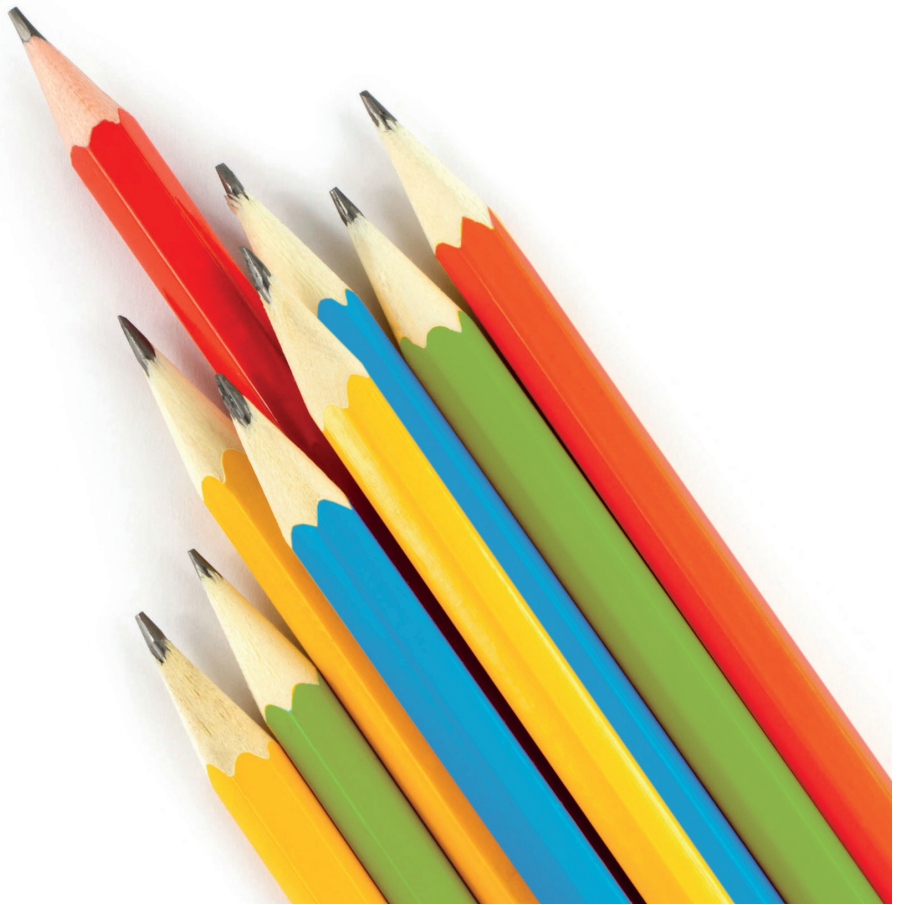


local

SPECIAL EDUCATIONAL  
CONCEPT



Information flyer for parents



Every child has right the to education, support and training adapted to his / her abilities. If necessary, children can be additionally supported with various development trainings.

Children are *challenged* and *encouraged* according to their talents and performance possibilities by designing the situation in the classroom in such a way that all participants find the best possible teaching and learning conditions. Promoting self-confidence, self-esteem, and self-evaluation are the key to educating child-

ren to become independent and life-affirming adults.

It may be that due to learning difficulties, behavioral problems or intellectual giftedness, children are promoted in addition to classroom education.

Special educational measures are available as additional support for classroom education.

As part of the integrated school support (ISF) children with special needs are not separated, but attend an ordinary class with additional integrated developing programm. The support includes not only school performance areas, but also learning and problem-solving strategies, as well as areas of perception, communication, motor skills, social behavior and personality development.

In addition to the specific assistance for children in a familiar context, the education focuses on the counseling and guidance of parents and the environment. Special needs education usually begins at preschool age and can be continued until the end of kindergarten. In individual cases, special needs education can be taken up again in kindergarten.

[www.hpdiens-tch](http://www.hpdiens-tch)

In *speech therapy*, preschool and school aged children are supported with communication, language acquisition, speech, voice and swallowing disorders and / or speech flow disorders. The support usually takes place in one-to-one lessons.

[www.logopaedieoberrheintal.ch](http://www.logopaedieoberrheintal.ch)

*Psychomotor therapy* (offered by the SRK therapy center Altstätten) focuses on the movement of humans as an expression of the relationship between body, soul and spirit. She assumes, that body experience and physical activity is an essential prerequisite for the child's motor, sensory, emotional, cognitive and social development. Psychomotor therapy supports and promotes this development.

[www.srk-therapie.com](http://www.srk-therapie.com)

*Dyslexia therapy* is aimed at children who have particular difficulties in the basics of written and spoken language, problems with perceptual processing, difficulties in attention span, ability to concentrate, or work speed.

*Dyscalculia* therapy is aimed at children who have basic understanding problems in mathematical foundations, perceptual processing, concentrating, abstraction ability or speed of work.

The *promotion of talented children* takes place primarily within the regular class. On the one hand, this support is provided by „enriching“ teaching with additional topics or special forms of learning, on the other hand by

„speeding up“ the learning speed of these children, e.g. Class skipping.

In individual cases children attend once a week, instead of the regular lessons, during 2-3 lessons an additional education, specialized for talented children in the learning studio. Here are their individual learning needs in the center.

In *DaZ classes*, German as a second language, children with a migration background are supported in acquiring basic knowledge of the German language. The aim is to develop written and oral knowledge of German, so that the child can find his way in everyday life and follow the lessons in class

## However, there are also children for whom an intensified learning program is necessary and meaningful.

Then it is possible to teach these children in a *small class*. The primary school EKMO leads the **basic year** (BasJ) in Oberriet, which is a transitional year or also „maturation year“ between kindergarten and first regular class. After the BasJ, children generally have a good basis for a successful learning in the first class of primary school. Children with proven need for support in their social behavior have the possibility to be taught in Alstätten in the Regional Kleinklasse (small class) beginning with the 3rd class.

Children with intensive or specific educational needs are taught in a **special school**, which offers special education and therapy.

The **School Psychological Service** (SPD) offers school psychological and speech correction consulting and diagnostics. The registration is usually made by the school in agreement with the parents.

[www.schulpsychologie-sg.ch](http://www.schulpsychologie-sg.ch)



“My son had difficulty in arithmetic and therefore was often frustrated. His performances were insufficient, although he had practiced regularly. Now he is attending weekly a promotion lesson in a small group. The math lesson gives him again more joy and he is much calmer, even when a test is pending. „

If the teacher identifies a problem with your child, he/she will contact you. You will discuss *together* the methods with which your child can be promoted in addition to class education. If necessary, a special educational program is requested. During the promotion, there are

regular discussions about the development and the progress of your child together with the specialist for special needs education (FLP). The special educational program for your child do not cost you anything.

## Extended offer

*Ergotherapy* is a medically prescribed medical treatment with an action-oriented approach to self-employment. The therapy is prescribed by the doctor and financed by the health insurance.

The *homework help* serves students who have difficulty solving their homework independently. The children can do their homework regularly under supervision. The homework help is part of the extended offer, that is why the parents pay a fee of CHF 80.00 per semes-

ter. The registration can be made by the teacher.

The *school social work*, briefly SSA, includes a set of social work benefits in favor of the school as a learning and living space. These achievements can be used by the pupils and their familial environment as well as by the class, the teacher or also a whole school house. Anyone may contact the SSA!

[www.jugend-or.ch](http://www.jugend-or.ch)